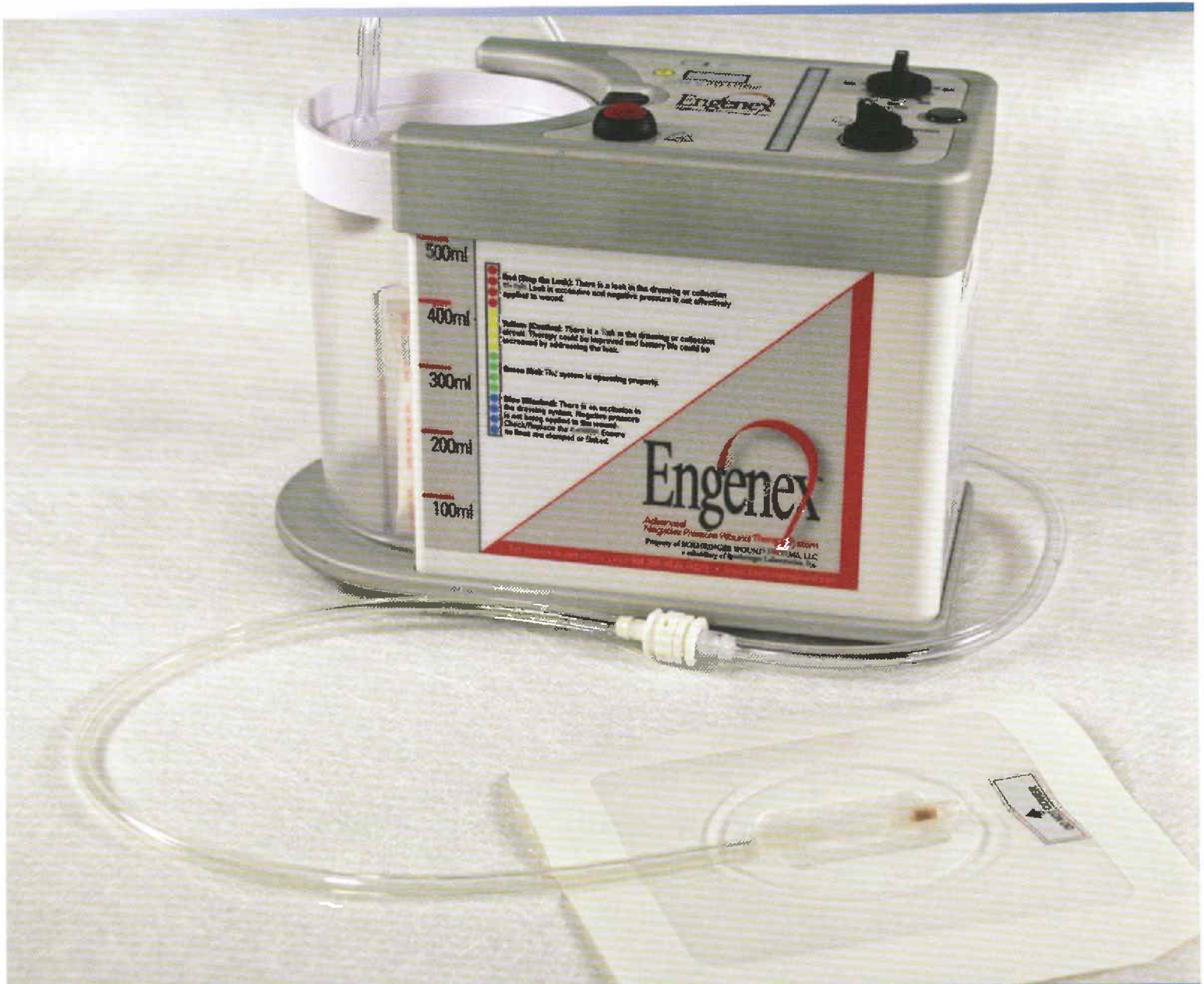


Engenex[®] with Bio-Dome[™] Technology

Advanced
Negative Pressure Wound Therapy System



Engenex[®] Advanced Negative
Pressure Wound Therapy System
with Bio-Dome[™] Technology

Engenex® WoundFlo™ Pump

- Simple, easy to use dial controls
 - Promotes patient safety
 - Easy to use one-handed operation
- Audible and visual alarms
 - Assurance that therapy is being delivered with visual indicator
- Engenex® WoundFlo™ Therapy Unit is used in acute and post-acute setting
 - Same for hospital and home use – simplifies training



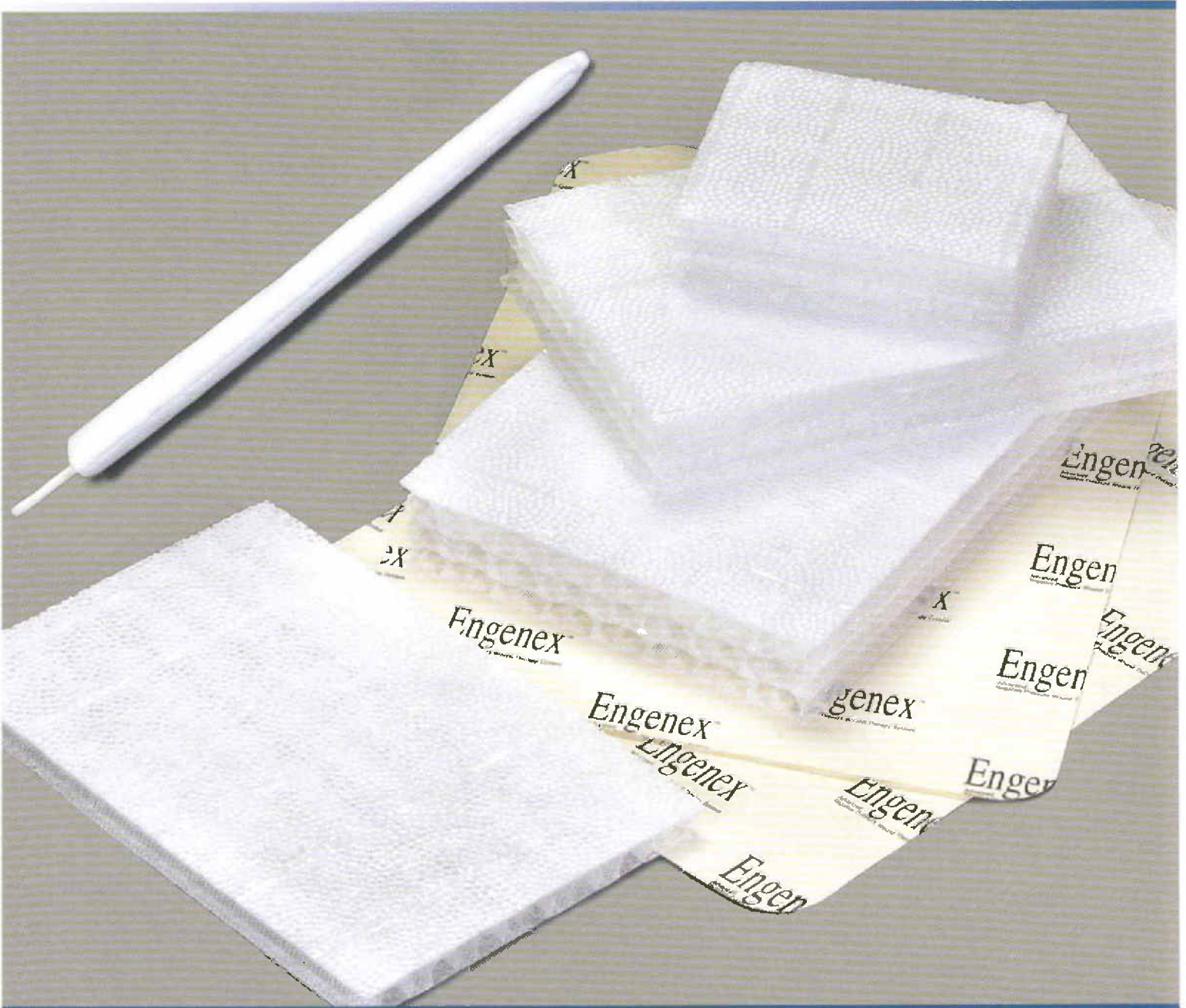
Key Benefits of Engenex® Advanced NPWT System

Compliant Hours™ Monitoring

- Continuously monitors the delivery of negative pressure with Compliant Hours™ Monitoring
 - Clinical Benefits:
 - Tracks therapy delivered
 - Provides feedback to caregiver and patient
- Only charge for hours of NPWT delivered
 - Economic Benefits:
 - No charge during dressing changes, OR time, or presence of leak/occlusion that effects therapy delivery

Engenex™ with Bio-Dome™ Technology

Advanced
Negative Pressure Wound Therapy System



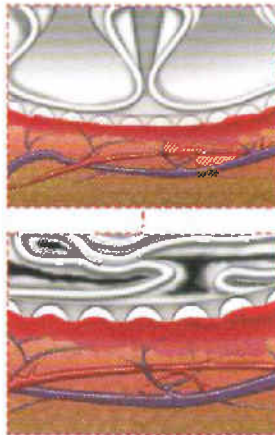
Engenex® Advanced Negative
Pressure Wound Therapy System
with Bio-Dome™ Technology

Unique and Proprietary Bio-Dome™ Dressing Technology

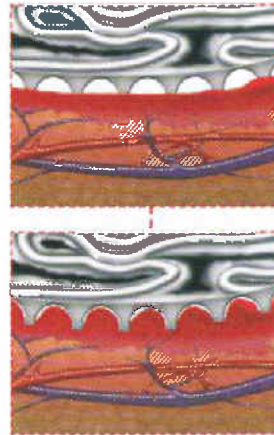
- Bio-Dome™ Standard and EasyRelease™ Dressings designed for optimal performance at a low 75 mmHg
- Bio-Dome™ EasyRelease™ Dressing designed to reduce pain, bleeding and tissue disruption upon dressing removal



Bio-Dome™ Technology



- Bio-Dome™ Dressing allows contact with wound surface
- Dressing provides clearly defined void volume
- Designed to maximize the effects of controlled cellular strain and provides 5-20% microstrain



- Resists collapse with application of 30-75 mmHg negative pressure
- Designed to provide unobstructed tissue growth.
 - Optimize granulation tissue growth and healing

Unique Features of Bio-Dome™ EasyRelease™ Dressing

- Designed to reduce pain, bleeding and tissue disruption upon dressing removal
 - Pain is a reported complication of NPWT dressing changes^{1,2}
 - Clinical opinion reports pain at dressing changes is a cause of discontinuation of NPWT¹

Wound Response: Bio-Dome™ Technology

- Appearance of wound upon dressing removal



Engenex® Tunnel Dressing

- Unique and proprietary dressing
- Promotes healing from distal end of tunnel
 - Ease of application
 - Removal in one piece



1. Bovill E, Banwell PE, Teot L, et al. Topical negative pressure wound therapy: a review of its role and guidelines for its use in the management of acute wounds. *International Wound Journal*. 2008; 5(4): 511-529. 2. Krasner DL. Managing wound pain in patients with Vacuum-Closure Devices. *Ostomy Wound Management* 2002; 48(5): 38-43.
 Engenex is a registered trademark and Bio-Dome, EasyRelease, and WoundFlo are trademarks of Boehringer Technologies L.P.
 Our world is what we make of it is a trademark of ConvaTec Inc. ©2008 ConvaTec Inc. AP-006952-US